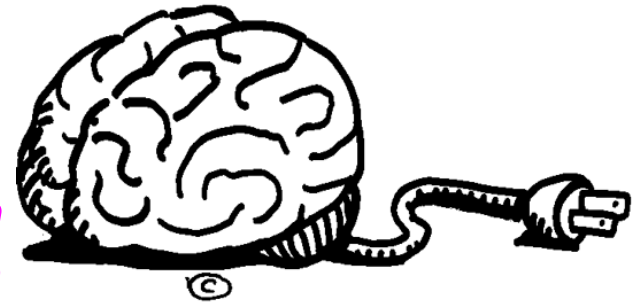


**9.5.2017**

**Welcome to Psychology!**



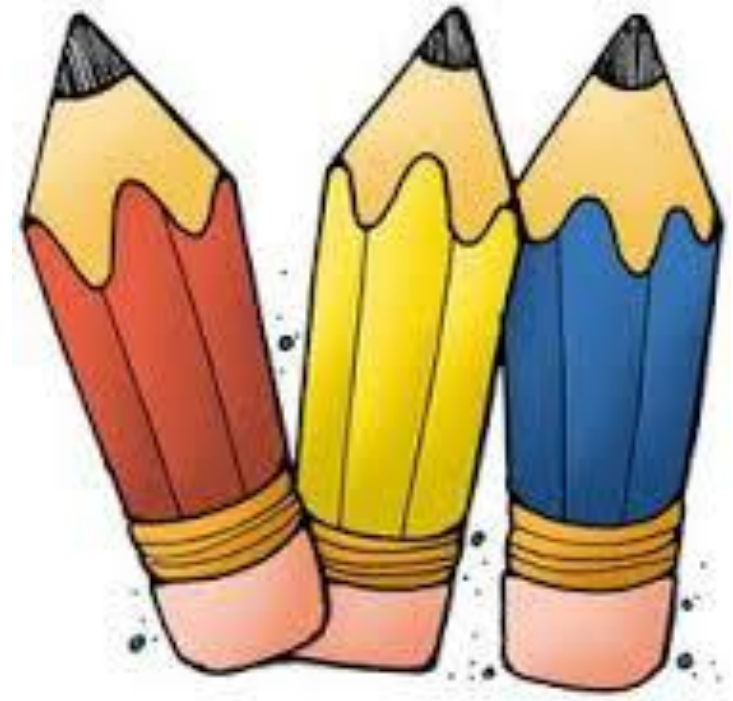
**Learning Goal:** The students will be become familiarized with class procedures.

- 1. Welcome to Class!!!**
- 2. Attendance and Seating Chart.**
- 3. Compass Points - Class Expectations**

**Success Criteria: Participation in the introductory Activity!**

# Class Supplies

- Pens or Pencils
- Notebook(s)
- Binder\*
- Highlighter(s)\*



# 9.6.2017

## First Full Day of Psychology!



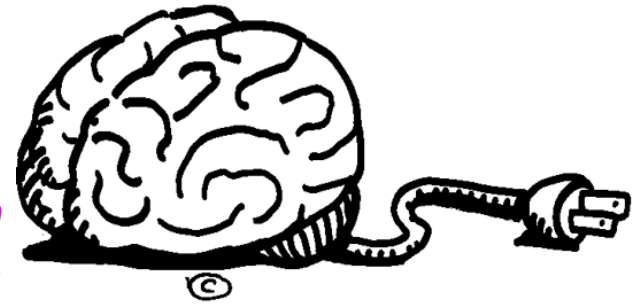
**Learning Goal:** The students will be become familiarized with class procedures.

- 1. Attendance**
- 2. What I "N"eed to know...Recap**
- 3. Review the course syllabus - Signature Due Monday**

**Success Criteria: Students will understand the format and procedure for the class.**

**9.8.2015**

# **Welcome to Psychology!**



**Please grab a ½ sheet of paper  
have a seat.**

- 1. Personality Inventory & Psychology Introduction**
- 2. Knowing**

**Today's Objective: To get to know YOU and introduce  
YOU to psychology at CHS!**

# Psychology is important because...

- Grab a piece of paper and a marker and complete this statement
- Use a thumbtack to post your thought on one of the bulletin boards in the back of the room



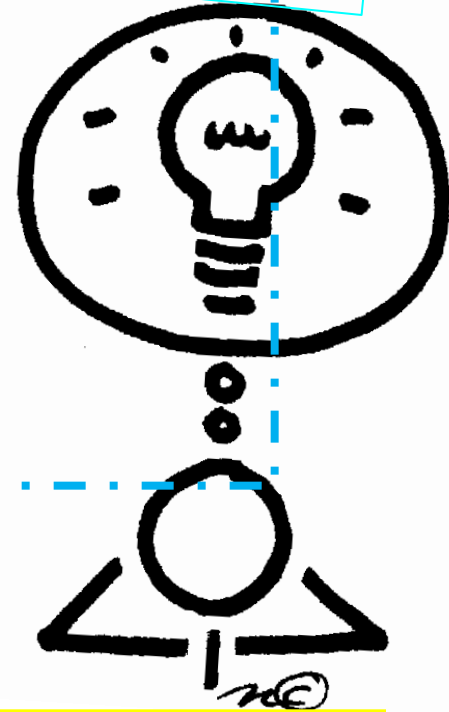
9.7.2017

# Psychology

**Learning Goal:** The students will indicate their present knowledge of psychology.

1. Psychology Pretest
2. Drawing Activity

Signed syllabus is due on Monday.



**Success Criteria:** The class will complete the psychology pretest.

**Please Draw a  
pig**

# Pig Results 1

- **Toward the top of the paper**, you are positive and optimistic.
- **Toward the middle**, you are a realist.
- **Toward the bottom**, you are pessimistic, and have a tendency to behave negatively.





# Pig Results 2



- **Facing left**, you believe in tradition, are friendly, and remember dates (birthdays, etc.)
- **Facing right**, you are innovative and active, but don't have a strong sense of family, nor do you remember dates.
- **Facing front (looking at you)**, you are direct, enjoy playing devil's advocate and neither fear nor avoid discussions.

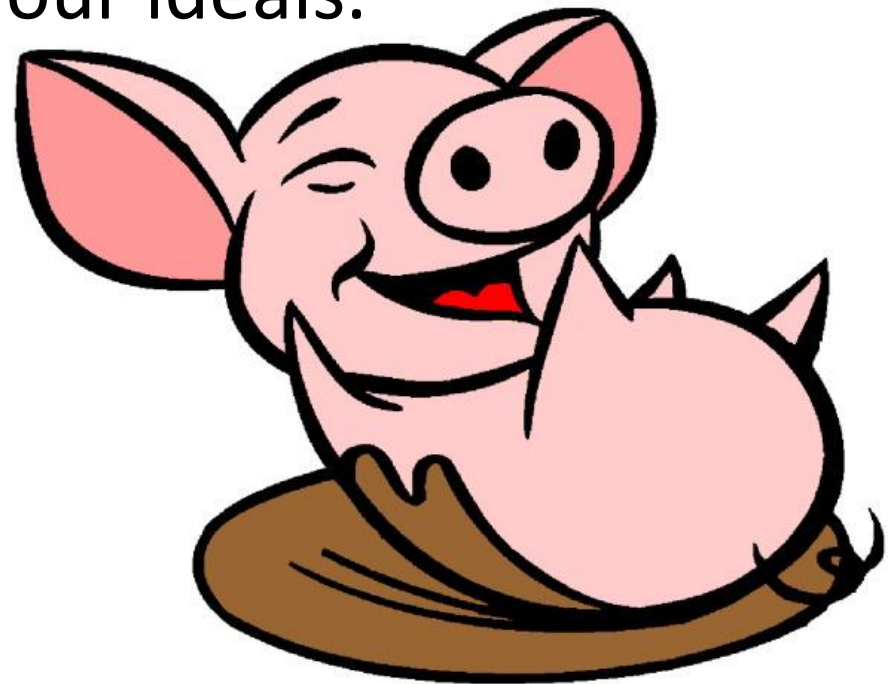
# Pig Results 3

- **With many details**, you are analytical, cautious, and distrustful.
- **With few details**, you are emotional and naive, you care little for details and are a risk-taker.



# Pig Results 4

- **With less than 4 legs showing**, you are insecure or are living through a period of major change.
- **With 4 legs showing**, you are secure, stubborn, and stick to your ideals.



# Pig Results 5

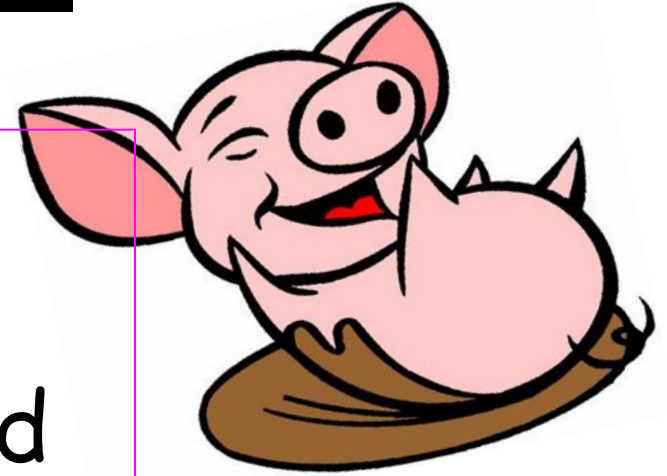
- The size of the ears indicates how good a listener you are. The bigger the better.



**9.8.2017**

**Learning Target: The students will explain the evolution of psychology**

1. Piggy Analysis
2. Psychology Evolution  
Timeline Directions and  
Work Time
3. The "Fun Theory"

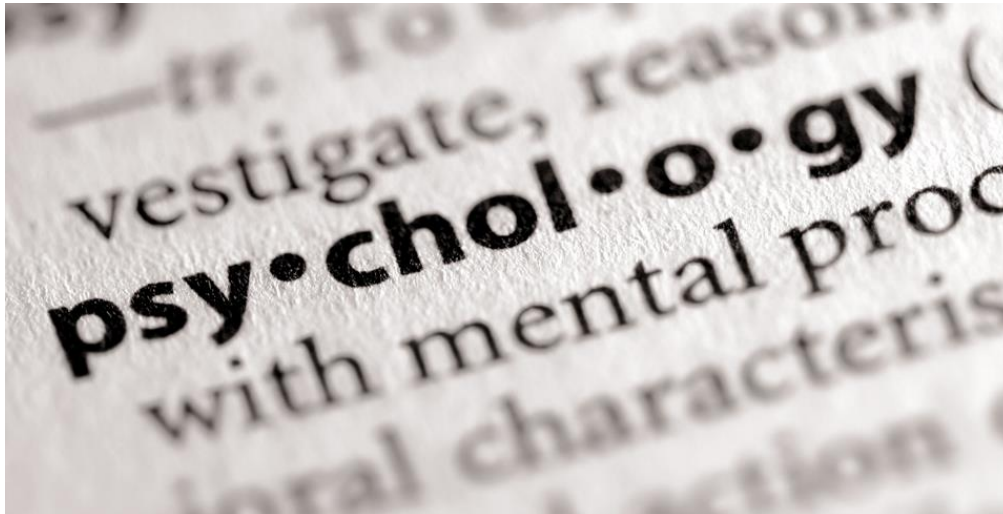


*Signed syllabus  
is due on  
Monday.*

**Success Criteria: The students will create a complete entry from psychology history.**

# Group Timeline

1. Find your group – No MORE than 3
2. Grab a Chromebook for your group members
3. Find your assigned section (pages 20-28)
4. Read your section and locate the following information...



# Timeline Structure and Information

1. The timeline entry must include:
2. Your main “subject” from the reading
3. Come up with a 1-3 sentence “blurb” summarizing the important info. related to your topic. Your summary will be included on your timeline entry.
4. Create a fully colored visual representing the topic. Why does this represent your topic?
5. Provide a written explanation of why this person/theory/etc. is important to understanding and explaining human behavior.

Title

Visual

Summary

# Exit Slip

**3 things you learned**

**2 thoughts you have**

**1 question you have**

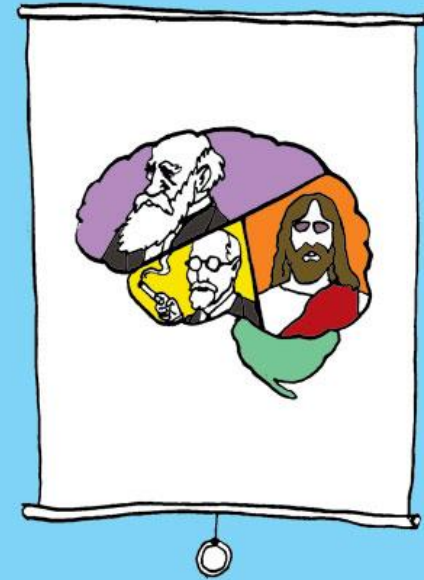
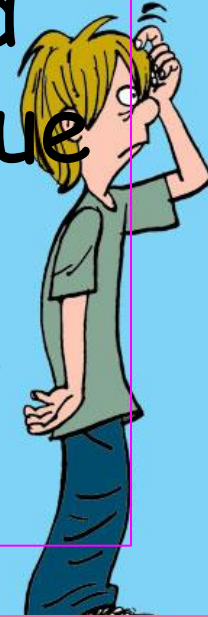


**9.11.2017**

**Learning Target: The students will explain the evolution of psychology**

**Turn in Course Syllabus!!!**

1. Compass Point - "Excited"
2. Timeline Work Time - Due Tomorrow
2. The Fun Theory - Video and Questions



**Success Criteria: The students will represent a complete entry from psychology history.**

# Fun Theory!

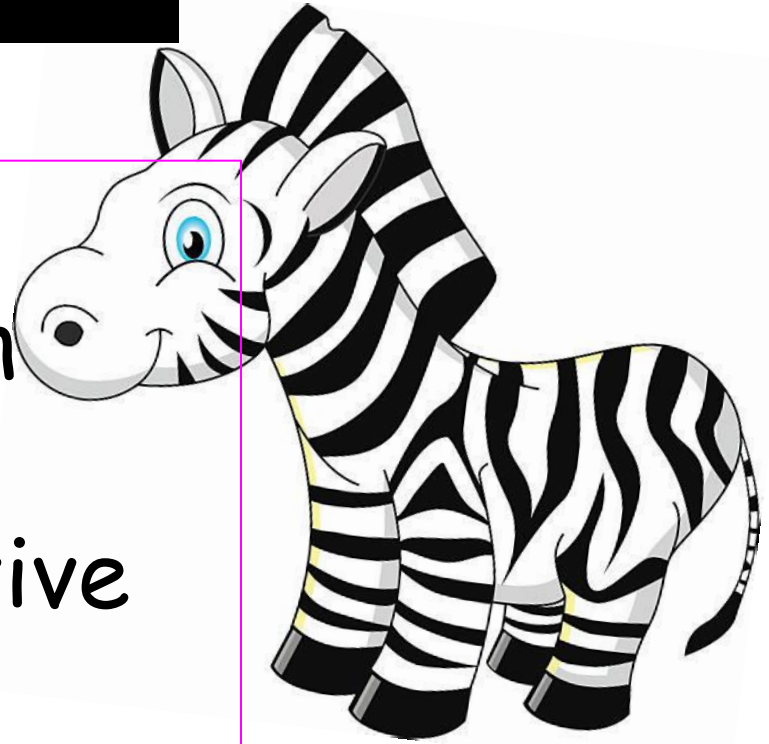


1. Does this experiment involve psychology? Why or why not?
2. What does this study tell us about human behavior?
3. How could the results of this theory be used?

**9.12.2017**

**Learning Target: The students will explain the evolution of psychology**

1. The Fun Theory
2. Psychology Evolution Timeline and Share
3. Psychology Perspective Chart (pages 28-31)



**Success Criteria: The students will present a complete entry from psychology history.**

# Theory Presentation

1. State the name of your theory
2. Explanation of theory **IN YOUR WORDS!**
3. Symbol to represent - Explain the visual and **WHY** you selected it
4. Read your slogan
5. Read your theme song and **EXPLAIN** the connection to the theory

# Seven Psychological Perspectives (Theories) – pages 28-33

- **Behavioral**
- **Biological**
- **Cognitive**
- **Humanistic**
- **Positive Psychology**
- **Psychodynamic**
- **Social-Cultural**



# Timeline Order

1. William Wundt
2. Titchener and Structuralism
3. Gestalt
4. W. James and Functionalism
5. Freud and Psychoanalysis
6. Psychodynamic
7. Pavlov
8. Watson and Behaviorism
9. Skinner
10. Maslow, Rogers, and Humanistic
11. Piaget
12. Topic – page 26: para 1 & 2
13. Topic – page 26: para 3,4,5
14. Topic – page 26/28: para 6,1,2
15. Eric Erikson
16. Albert Bandura

# ***Fun theory day 2!***

<http://www.thefuntheory.com>

**1. Think hard! How does the fun theory characterize human beings?**

**2. What are the flaws with this theory?**



**9.13.2017**

**Learning Target: The students will explain how psychologists view behavior in unique ways.**

1. Complete Timeline Entry  
Share
2. Perspective Chart - Cont'd
3. Video - Perspective  
Application Analysis:  
Model and Discuss



**Success Criteria: The students will identify how each theory would explain a behavior.**



**Select ONE of the theories and explain why Geri behaves the way he does.**



# Psychology 9.14.2017



**Learning Target: The students will explain how psychologists view behavior in unique ways.**

## Activities

1. Discuss Geri's Game
2. Pixar Clip#2 - For the Birds
3. Continue Theory Chart

**Success Criteria: The students will apply the seven psychological theories to a set of scenarios.**

**Theory  
Quiz  
Wednesday**

# Psychology 9.15.2017



**Learning Target: The students will explain how psychologists view behavior in unique ways.**

1. Discuss Pixar Clip #2 - For the Birds
2. Perspective Scenario Application and Highlight
3. Perspective Chart - Due Tuesday

**Success Criteria: The students will apply the seven psychological theories to a set of scenarios.**

**Theory  
Quiz  
Thursday**

**9.18.2017**



# **Constitution Day**

- 1. Constitution Day Purpose**
- 2. Constitution and Personality Research**
- 3. Amendment Poster**

**Theory Test  
Thursday**

***Today we will explore the Constitutional connections to personality.***

**Perspective Chart DUE  
Tomorrow**

**9.18.2017**



**Constitution Day**

**1, 2, 3, 4, 5, 6, 8, 10, 12, 13,  
15, 18, 19, 21, 22, 26**

**9.18.2017**



# **Constitution Day**

**1, 2, 4, 5, 6, 7, 8,**

**10, 12, 13, 14,**

**15, 18, 19, 21, 22, 24, 26, 27**

# **Theory/Perspective Poster**

- 1. Name of theory**
- 2. Explanation of theory IN EASY PEASY WORDS!**
- 3. Symbol to represent**
- 4. Slogan to help remember theory**
- 5. Theory “Friend”**

# Psychology 9.19.2017

**Learning Target: The students will explain how psychologists view behavior in unique ways.**



1. Complete Amendment Trait Poster
2. Check - Perspective Chart
3. Perspective Scenario Application Questions #2

**Theory Quiz  
(20 Questions)  
Thursday**

**Success Criteria: The students will complete the perspective scenarios.**



1. **Cognitive-** Thinking, processing, interpretation. Looks at thoughts.
2. **Biological-** biological structures, hormones, cells, brain chemistry. Looks at body.
3. **Social-Cultural-** How setting impacts behavior
4. **Behavioral-** actions, behaviors, how we learned through rewards & punishment
5. **Humanistic-** How we strive to reach our full potential, looks at what we need or what needs we have met
6. **Psychodynamic-** Childhood experiences, stuff that unconsciously impacts behavior
7. **Positive Psychology-** Looks at a person's strengths to solve a problem

# Psychology 9.20.2017

**Learning Target: The students will explain how psychologists view behavior in unique ways.**

1. Partner/Discuss Psychology Scenarios
2. Perspective Review Puzzle



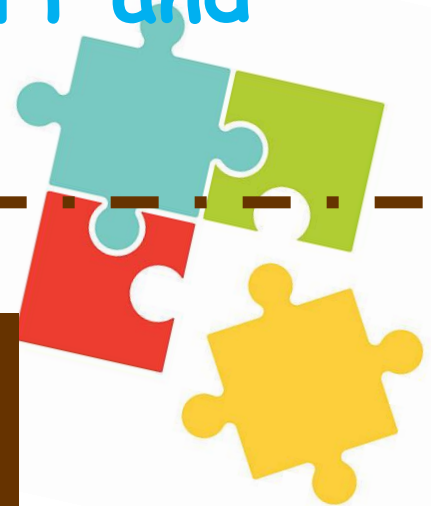
**Perspective  
Quiz  
Tomorrow**

**Success Criteria: The students will complete the theory puzzle.**

# Psychology 9.20.2017

**Learning Target: The students will explain how psychologists view behavior in unique ways.**

1. Turn in Perspective Reflection Ques and Review Puzzle.
2. Discuss Psychology Scenarios
3. Quiz - The Psychological Perspectives
4. What makes you - YOU: Chart and Discussion

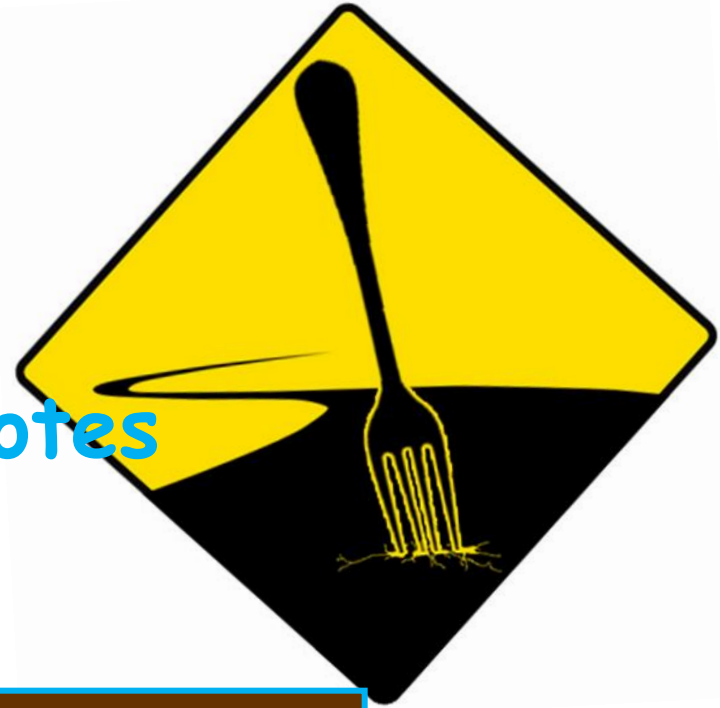


**Success Criteria: The students will complete the theory quiz.**

# Psychology 9.22.2017

**Learning Target: The students will explain the impact of nature and nurture on our behavior.**

1. Discuss Biology. vs. Environment
2. Video - The Other Wes Moore
3. Module 3 Guided Notes (pgs. 37-47)



**Success Criteria: The students will identify biological and environmental traits.**

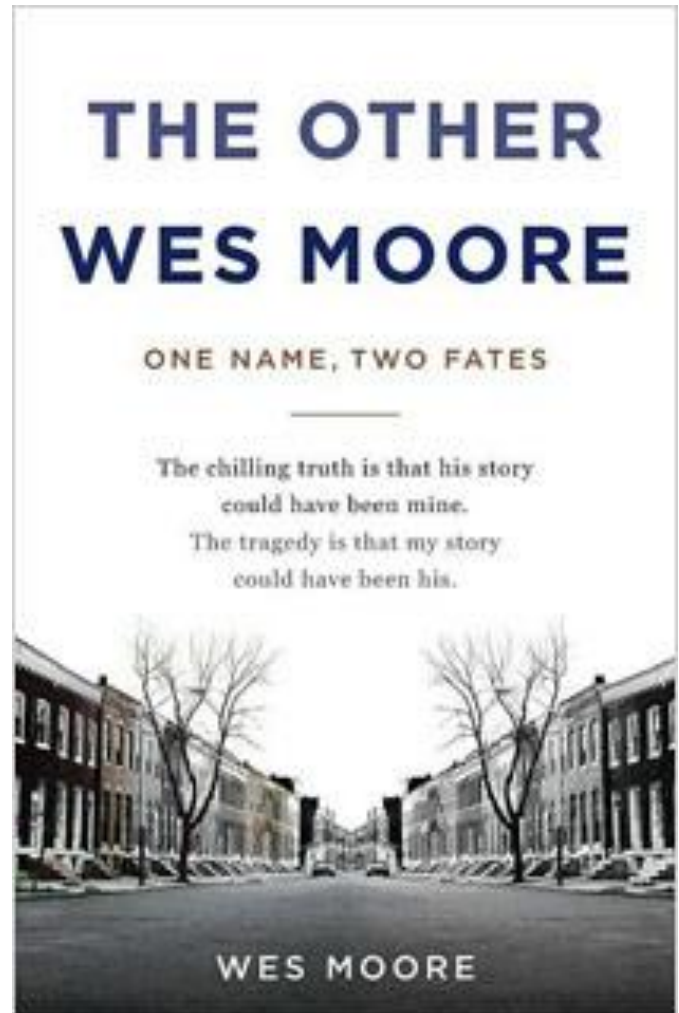
**Happy Friday!!!**

# The Other Wes Moore- Clip

**1. WHY DID I SHOW YOU THIS CLIP?**

**2. Thoughts?**

**3. What does it make you realize?**



# Psychology 9.25.2017

**Learning Target: The students will explain how psychologists view behavior in unique ways.**

1. Bellringer - Represent YOUR influence
2. Video Clip - Epigenetics
3. Influences on Behavior Activity
4. Guided Notes -  
Nature  
Nurture and  
Psychology



**Success Criteria: The students will rate behaviors as nature vs. nurture.**

**Last Week of  
September!!**

THEIR GENES ARE NEUTRAL  
 TO IT AND WE THEN  
 GENERATE EXPERIMENT  
 THAT HAVE MADE THEM IN  
 DIFFERENT, RIGHT?



# EPIGENETICS

**NURTURE**



**NATURE**



# Psychology 9.23.2015

**Learning Target: The students will explain how psychologists view behavior in unique ways.**

## Activities

1. Perspective Quiz
2. Video Clip/Questions - Wes Moore
3. Introduce Nature vs. Nurture and Psychology

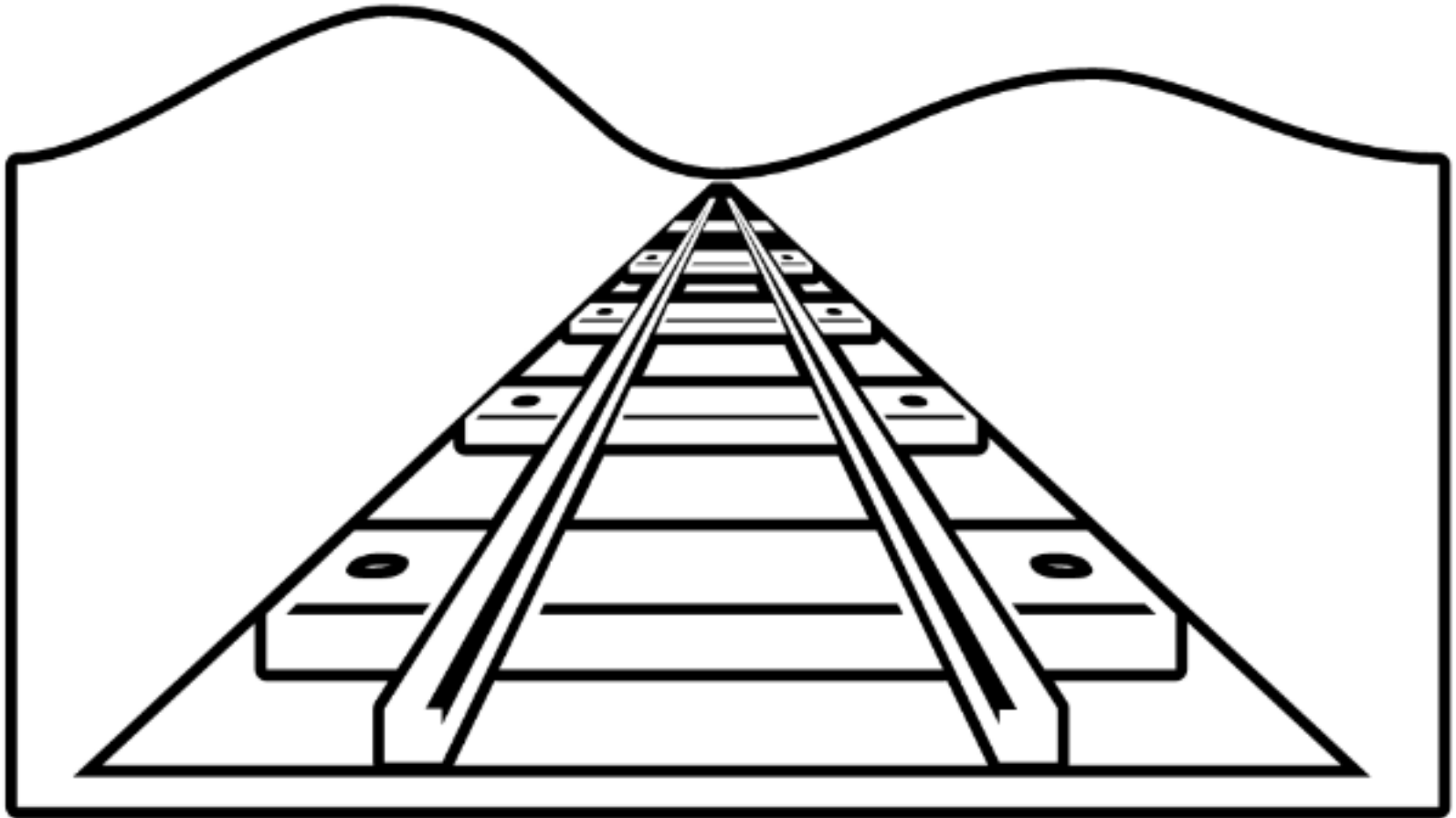


**Success Criteria: The students will complete the Ch. 3 guided notes.**

**Theory Quiz Today!!!**



**What does this story tell us?**



# Psychology 9.26.2017

**Learning Target:** The students will identify the impact of nature and nurture on behavior.

1. Discuss Influencing Behavior Question
2. Nature vs. Nurture Video
3. Video - Mind of a Serial Killer/Ques.
4. Guided Notes - Due Tomorrow



**Success Criteria:** The students will complete the Ch. 3 guided notes.

$\frac{1}{2}$  Day  
Tomorrow

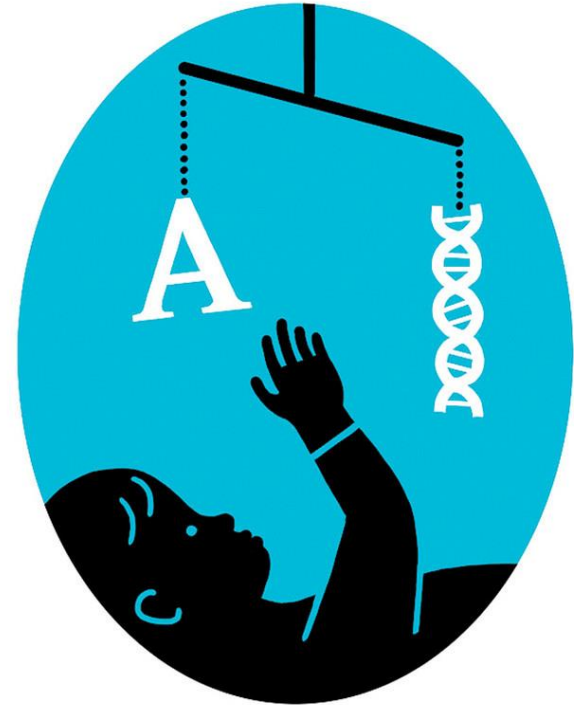
# The Mind of a Serial Killer



# Psychology 9.27.2017

**Learning Target: The students will apply the concept of nature vs. nurture to a provided scenario.**

1. Turn in Guided Notes
2. Nature vs. Nurture and YOU questions



**Success Criteria: The students will complete provide their own Nature/Nurture scenarios.**

**1/2 Day TODAY!**

# Psychology 9.28.2017

**Learning Target: The students will apply the concept of nature vs. nurture to a provided scenario.**

1. Group Activity Assignment
2. "Who Will Survive" Activity
3. Video - Let's Meet Zach

**Turn in Guided  
Notes**



**Success Criteria: The students will complete the "Who Should Survive Activity".**

# Psychology 9.29.2017

**Learning Target: The students will explain how ethics relates to psychology.**

1. View and Discuss "Who Will Survive" Activity and "Zach" video
2. Video Clip - "What Would YOU do?"
3. What is Ethics?
4. Ethics and Occupation Activity
5. Notes and Discussion - Ethics



**Success Criteria: The students will complete the Ethics in Life Chart**

**Have a GREAT Weekend!!!**

# Let's Meet Zach



WHAT  
WOULD  
YOU  
do?



9.12.2013

1. Bell Work: What does it mean to be ethical!?
2. Ethics Notes and Discussion
3. Ethics Scenario Chart



*Today we will understand how ethics are used in the field of psychology.*

# Uncovering Ethical Behavior

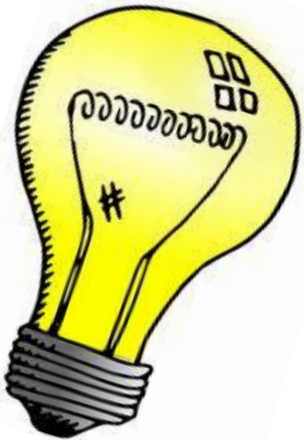
9.15.2013

1. Video - What is Ethics?
2. How we develop ethics -  
Question
3. Video - Ethics in OUR world
4. Who Should Survive?



Theory Test THIS Friday

*Today we will apply and ethics to our decision-making process.*



# Psychology 9.26.2016

**Learning Target: The students will explain how ethics relates to psychology.**

## Activities

1. Turn in Guided Notes/ Packet
2. What Would YOU Do? Videos
3. Ethics in Psychology Notes



**Success Criteria: The students will complete the Ethics Scenario Questions.**

**Homecoming  
Week!!!**

# Psychology 10.2.2017

**Learning Target: The students will explain how ethics relates to psychology.**

1. In your notebook...why are ethics necessary?
2. Ethical or Not? - "Little Albert"
3. Ethics in Psychology Notes
4. Ethics Scenario Chart/Ques.



**Success Criteria: The students will complete the Ethics Scenario Questions.**

**Homecoming WEEK!!!**

# Psychology 10.3.2017

**Learning Target: The students will explain how ethics relates to psychology.**

1. Review...What factors contribute to the ethics of an experiment?
2. Ethics Scenario Chart/Ques.
3. Ethics in Psychology Poster



**Progress reports due tomorrow!**

**Success Criteria: The students will complete the Ethics Scenario Questions.**

# Ethics Warning Sign

Refer to YOUR notes when completing the activity.

#1 Animal Research

#2 Right to Debriefing

#3 Right of Confidentiality

#4 Right to be Protected  
from Harm and Discomfort

#5 Informed Consent



# Psychology 10.4.2017

**Learning Target: The students will identify the methods used to conduct psychological research.**

1. Ethics in Psychology Warning Poster
2. Research Intro.  
Question
3. Notes and Discussion:  
Research Methods



**Success Criteria: The students will construct an unethical warning sign.**

**Ethics Chart due  
TOMORROW!!!**

**What makes you, you?**  
**Why do you think so?**





# Psychology 10.5.2017

**Learning Target: The students will identify the methods used to conduct psychological research.**

1. Turn in Ethics Article Chart

2. Crash Course

Psychology Research

3. Notes and Discussion:  
Research Methods

4. Poster Work Time



**Success Criteria: The students will complete the research outline.**

**Warning Poster due tomorrow!**

**Love  
Drug Abuse  
Intelligence**

**How would 7  
perspectives  
approach the  
topic? What  
questions would  
be asked?**

# Psychology 10.6.2017

**Learning Target:** The students will identify the methods used to conduct psychological research.

1. Turn in Ethics Warning Sign
2. Notes and Discussion: Research Methods
3. Psychology Research Video Part 1
4. Research Type +/-

Have a GREAT Homecoming!

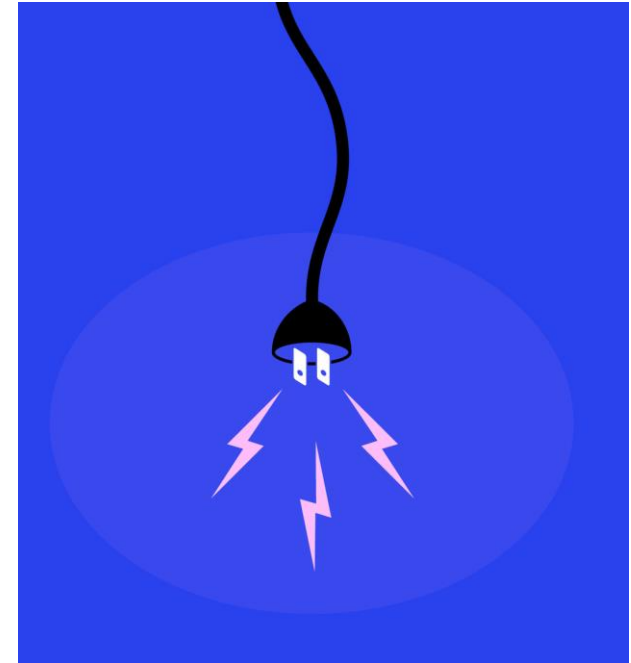


**Success Criteria:** The students will complete the research outline.

# Psychology 10.9.2017

**Learning Target: The students will identify the methods used to conduct psychological research.**

1. Research Video Review
2. Research +/-
3. Obedience and YOU Question



**Success Criteria: The students will identify the +/- of the different research methods.**



Cognition Memory

Learning

Development

Personality

Perception Physiology

Society

Health

Language

**How obedient are you? Why do you think so?**

**Would you follow directions from a teacher or parent if you didn't agree with what was being asked? Why or why not?**

# Psychology 10.10.2017

**Learning Target: The students will identify the components of psychological experimentation.**

1. Turn in +/- Chart
2. Research Method Review  
(pgs. 57-61)
3. The Milgram Experiment -  
Video and Response Chart
4. Notes and Discussion -  
Experimentation in Psych.



**Success Criteria: The students will write descriptions for the key concepts to psychological experiments.**





SHOCK GENERATOR TYPE ZLB  
DYSON INSTRUMENT COMPANY  
WALTHAM MASS.  
OUTPUT 15 VOLTS - 400 VOLTS

MODEL ZLB

ON OFF  
MAIN POWER

VOLTAGE  
ENHANCER

ATTENUATOR

PHASE

PULSE FREQUENCY

0/100 VOLTS

VOLTAGE

1 2 3 4 5 6 7 8 9 10 11 12 13 14 15 16 17 18 19 20 21 22 23 24 25 26 27 28 29 30  
15 VOLTS 20 VOLTS 25 VOLTS 30 VOLTS 35 VOLTS 40 VOLTS 45 VOLTS 50 VOLTS 55 VOLTS 60 VOLTS 65 VOLTS 70 VOLTS 75 VOLTS 80 VOLTS 85 VOLTS 90 VOLTS 95 VOLTS 100 VOLTS 110 VOLTS 120 VOLTS 130 VOLTS 140 VOLTS 150 VOLTS 160 VOLTS 170 VOLTS 180 VOLTS 190 VOLTS 200 VOLTS 220 VOLTS 240 VOLTS 260 VOLTS 280 VOLTS 300 VOLTS 320 VOLTS 340 VOLTS 360 VOLTS 380 VOLTS 400 VOLTS

SLIGHT SHOCK ——— MODERATE SHOCK ——— STRONG SHOCK ——— VERY STRONG SHOCK ——— INTENSE SHOCK ——— EXTREME INTENSITY SHOCK ——— DANGER: SEVERE SHOCK ——— X X X

**What kind of research method was this?**

**Do you consider this example of research to be ethical?**



**How does this experiment connect  
to our discussions on research  
models?**



# **Fact or Fiction?**

- \* Pick 10 statements**
- \* Tell me if you agree or disagree with the statements**
- \* Explain WHY! USE SUPPORT!**

# ***Puzzle Response***

***(1 puzzle piece per article)***

**T = Topic**

**R = Results of Study**

**Y = Your Thoughts**

# ***Puzzle Response***

***On the outside of each piece...***

**P = Psychology Connection**

***Within the last puzzle piece...***

**Explain the purpose of  
today's activity and  
explain your reasoning**

# ***Last but not least...***

**\* Select 1 proverb of  
your choice**

**\* Explain an  
experiment to “test” it**



# Psychology 10.11.2017

**Learning Target:** The students will identify the methods used to conduct psychological research.

**Research Quiz NEXT Wednesday!!!**

1. Discuss "Choosing Research Methods" Activity
2. Stanford Prison Video



**Success Criteria:** The students will compare experimental procedures.



# Psychology

10.12.2017

**Learning Target: Students will be able to identify the components of the psychological experiment.**

**Research Vocabulary Quiz –  
Wednesday!!!**



1. **Milgram Squares – Pass the Poster**
2. **Notes and Discuss – Psychological Experiment**
3. **IV/DV Scenarios**

**Success Criteria: The students will apply the components of psychological research to IV/DV scenarios.**

# Psychology

10.13.2017

Learning Target: Students will be able to identify the components of the psychological

Friday the 13<sup>th</sup>!!!

PsyToolkit



1. Discussion: DV/IV Scenarios
2. Notes and Discussion - Experimentations
3. Experiment - Reinforcement
4. Simpsons Experiment Practice Scenarios

Research/Experiment Quiz  
10/18/2017

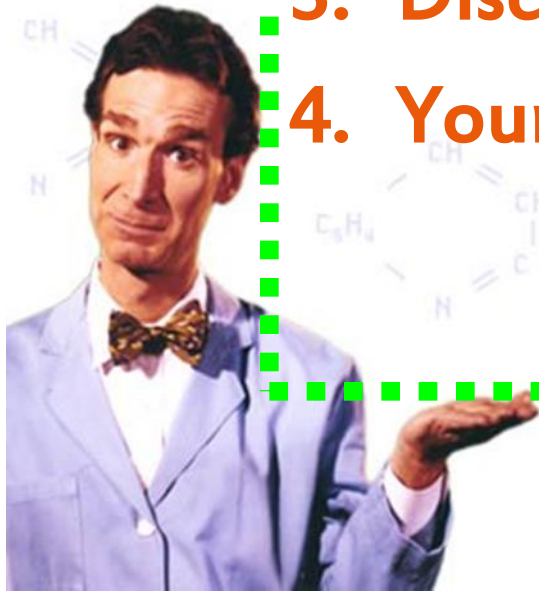
Success Criteria: The students will apply their knowledge of the IV/DV to experiment scenarios

# Psychology

10.16.2017

Learning Target: Students will be able to identify the components of the psychological

1. Experiment Video Review
2. Riddles? Why
3. Discuss – Simpsons Scenarios
4. Your Experiment Model



**Research/Experiment Quiz**  
**Wednesday 10/18/2017**

**Success Criteria: The students will develop their own experiment model.**

# TEST

CONTROL



EXPERIMENTAL



**You are walking in the  
desert and find a man lying  
face down with a pack on  
his back, dead. How did he  
die?**

**He was a sky diver  
and thought it was  
a parachute.**



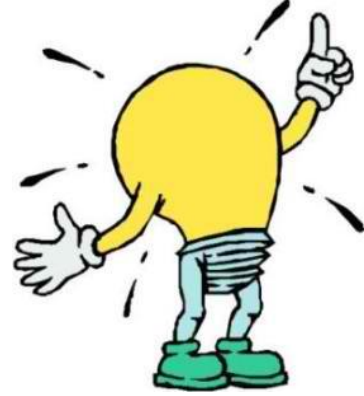
**A man walks into a bar and asks the bartender for a glass of water. The bartender reaches under the bar, pulls out a gun, and points it directly into the man's face. The man says "Thank you!" and quietly exits the bar. Why did the man thank the bartender?**

**He has the  
hiccupps!**

**A man is traveling from work and wants to go home. He will not go home because there is another man in a mask waiting there for him. What does the first man do for a living?**

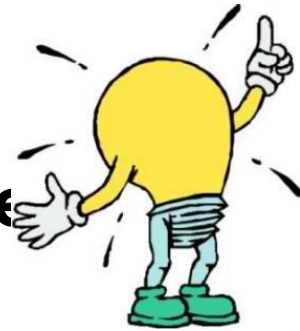
**He is a  
baseball  
player!**

**What is the  
connection of  
riddles to  
psychological  
research?**



# Why riddles?

- View a problem from more than one perspective
- Prior assumptions can be misleading
  - Details that do not fit with expected patterns are often important
- Persistence is the key
- When we expect complex solutions, we often overlook simple ones



# **What is the...**

- **Hypothesis** (after observation):
- **Independent Variable**
- **Dependent Variable**
- **Operational Definition**
- **Confounding Variable(s)**

# Let's Chat About...



the SIMPSONS.



# 10.17.2017

Today we will synthesize concepts related to psychological research!

1. Experiment Graphic Organizer
2. Quiz Review
3. Homework - Study for Research/Experiment quiz



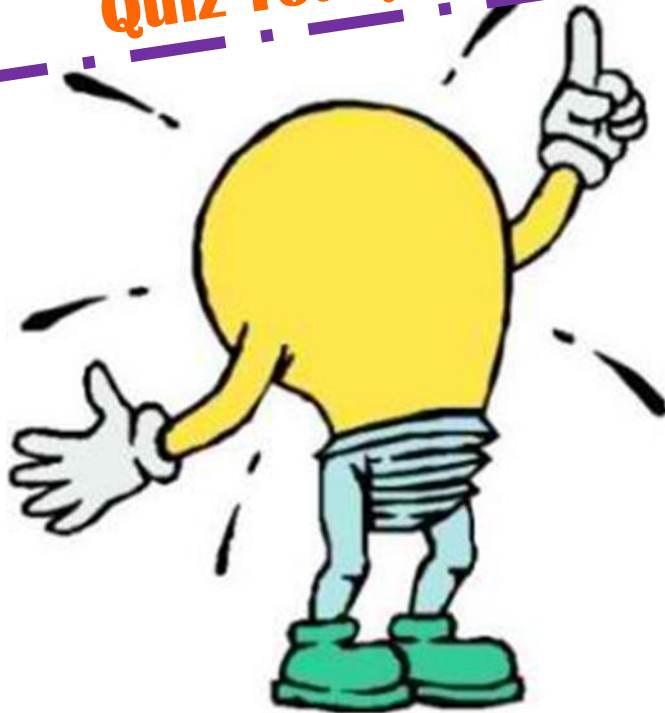
Research Methods and  
Experimental Concept Quiz  
Tomorrow 10/18/2017

# Psychology

10.18.2017

Learning Target: Students will be able to identify the components of the psychological

**Research/Experiment  
Quiz Today!!!**



1. Quiz: Psychological Research and Experiment
2. Experiment Model – Complete
3. Communication – “Try This” Activity
4. Communication and You

**Experiment Model Due Tomorrow!**

**Success Criteria: The students take the assessment covering research methods in psychology.**

**Confounding Variables:** Any variable that might unintentionally effect the results of your study.

**Example:**

- Studying the effect of music on test scores

**Confounding Variables:**

- Your population is a group of geniuses
- The environment they test in - cold, hot, etc.
- Different types of music - Opera vs. Pop

**How to Un-Confound:**

- Random Selection
- Population Size
- Blind Study
- Double Blind Study

**Replication**

